

SPECIAL  
POINTS OF  
INTEREST:

- 2009-2010  
Agriculture  
Enrollment
- Genex Artificial Insemination Clinic hosted by BMCC
- Rodeo Team Ranked 5th Nationally, looks to repeat success at CNFR
- Livestock Judging Team Competes at two national Contests

INSIDE  
THIS ISSUE:

- Nutrition 2  
Steer Results
- Rodeo Team 3
- Value Added 3  
Products
- Stock Dog 4  
Class
- Ag Dept. 4  
Enrollment
- Coffee 5
- Livestock 6  
Judging Team

# Timberwolves Agriculture

## Yearly Newsletter

VOLUME 2, ISSUE 1

SPRING 2010

### BMCC Young Farmers & Ranchers Club

The BMCC Young Farmers and Ranchers club is in its third year of operation and has made giant leaps this past year in growth and organization. YF & R is a collegiate club affiliated with the Oregon Farm Bureau and the American Farm Bureau.

Anyone can be in the YF & R organization as long as you are 35 years or younger. BMCC is the only college with a YF&R west of Colorado State University.

This year the club has grown to over 35 members that took active roles at the Oregon Farm Bureau Convention in Hood River as well as the National Farm Bureau convention held in Seattle, WA.

Three years ago instructors and



students came together with an idea to have an agriculture club at the BMCC campus much like most universities do. They chose Farm Bureau because it was all including of all aspects of agriculture not leaving out one special interest group. The Oregon state YF&R also has activities and contests for students such as the agriculture debate contest held at the state

convention. Oregon Farm Bureau has been gracious enough to help the club get established by providing a thousand dollars each of the last three years to get students to the state convention and has now proposed that the highest placing student in the debate contest will

have a paid way to the national convention each year.

#### 2010 Officers:

*Pres: Crystal Deschaine*  
*VP: Ashley Graning*  
*Sec: Taylor Thompson*  
*Tres: Kayla Taylor*  
*Rep: Kristen Follett*  
*Advisor: Nick Nelson*

### 2010 Cropping Schemes

BMCC beholds the only community college farm in the state of Oregon. The Ag Complex and farm comprises a hundred acres with a shop, food processing center, 3 greenhouses, livestock working corrals, a small 7 acre pivot, 9 acres of wheel lines, and 20 acres of irrigated pasture. The rest of the acreage is rangeland or dryland grains.

This year the students are producing alfalfa hay for livestock

use and Austrian Peas also for hay production. The pivot will be used for two different row crops—potatoes and pumpkins.

The potatoes will be grown, processed and marketed by students to the Pendleton Farmers Market. The pumpkins are grown for ele-

mentary age students who come to the farm in the fall for agricultural tours and are used through the agriculture issues course.



# Nutrition Classes Raises Exceptional Beef!



Livestock Judging Class selecting heifers in the fall.

Each year the Agriculture Department buys steers to feed and teach the Animal Nutrition class. This year the choice was to use heifers. "Heifers will finish out sooner and usually grade better and have more muscle per pound of body weight than steers". The other advantage to using heifers is the opportunity to use them in other classes.

This year the feedlot cattle were bought from Dave Cannon weighing 800#. The Nu-

trition class broke them into three pens of three and were assigned to feed and monitor the cattle. Students are graded on their ability to get the best gains as well as the best cost per gain on their pen. Students has several choices of forages and concentrates to feed and were responsible for formulating rations each week.

The heifers were also used by the livestock evaluation class and underwent synchronization trials with the Animal

Reproduction class. The animals were then marketed and sold as locker beef.

The following are the quality and yield grades on the first four heifers harvested.

ID	Wt	Cwt	QG	YG
A	1201	745	Ch	2.7
C	1333	827	Pr-	3.9
F	1222	757	Ch-	2.9
H	1235	765	Ch+	1.8

## AGRICULTURE

### INSTRUCTORS

Mechanics / Plant Science

Preston Winn

[pwinn@bluecc.edu](mailto:pwinn@bluecc.edu)

Ag Business / Crops

Dale Wendt

[djwendt@bluecc.edu](mailto:djwendt@bluecc.edu)

Animal Science

Nick Nelson

[nick.nelson@bluecc.edu](mailto:nick.nelson@bluecc.edu)



## Genex Sponsors AI Clinic

Genex Cattle Reproductive Services sponsored a two day A.I. clinic with Blue Mountain Community College at the college facilities. Morgan Johnsrud, Clint Sexson and Nick Nelson instructed the class of 15 on AI techniques, semen handling, cattle fertility, and synchronization. The clinic got students hands in

opportunities on both cows and heifers with instructors close at hand to assist in the Artificial Insemination process.

Students had the opportunity to learn about the new technology, thawing processes and synchronization methods out their for cattle reproduction.

The clinic served as a great refresher course for many of the students and encouraged

local ranchers to look at A.I. as an option over buying bulls. Capable students received a certificate of completion at the end of the clinic.

Adam Green and Cable Creek Ranch donated the use of the cows, Genex provided all of the supplies and BMCC provided the facilities.

Genex is looking at doing two Clinics per year at the BMCC



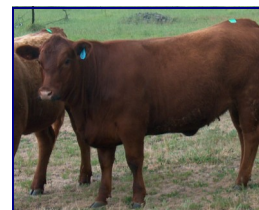
**HOMEDALE BLIZZARD**  
**BW WW YW Milk**  
**-3.4 11 20 1**

## BMCC Shorthorn Project

BMCC Animal Science has retained two purebred Red Angus heifers to keep as the start of a retained college herd. The problem—No papers; the solution—breed to Shorthorn. By breeding to Shorthorn bloodlines offspring can be registered through the Shorthorn Association as

Shorthorn Plus as well as Red Durham. The goal of the program is to have a few cattle to produce project steers for 4-H and FFA members to have the style and appeal that excels in the ring but also provide the carcass quality needed by the industry. This year students show the heifers at the Uma-

tilla County Fair and has just completed a 14 day CIDR protocol breeding to the Shorthorn Bull named Blizzard. Look to see Shorthorns come back into Umatilla County in the future.



# Rodeo Team Qualifies For College National Finals



The Blue Mountain CC Rodeo Men's team place 2nd in the region for the second straight year and is ranked 5th in the nation. The team will consist of Dakota Eldridge—Elko Nevada, RC Landingham—Pendleton, OR, Bryan Martinat—Marsing, ID, Justin Jarvis—Mtn Home, ID, Kiel Malone—Weiser, ID, Rusty Gill—Gooding, ID and Tait Tucker—Ellensburg, WA.

Dakota Eldridge won the region in Steer Wrestling, place third in Team Roping and Tie-down Roping and will partner with Justin at the College Finals. Dakota also won 2nd in the Men's All Around.

Bryan Martinat was last years CNFR Bronc Riding Champion and will compete this year to defend his title after winning the region by over 400pts.

RC Landingham will compete in the Bull Riding after winning the Bareback Championship last year. Kiel Malone place second in the region for Saddle Bronc and will compete for the first time at the College Finals.

Tait Tucker and Rusty Gill will round out the men's team and will compete in the tie-down roping.

Kayla Tiegs—Melba, ID will be the sole representative for the women's team qualify

in Goat Tying and Breakaway roping as she placed second in the region under the Women's All Around.



## BMCC Hosts District FFA Mechanics Contest



On April 22nd over 150 Blue Mt. District FFA contestants descended

upon BMCC to compete in the Shop Skills Contests. BMCC Agriculture Department members hosted the contest along with industry support

from Norco and OxArc. Students were provided lunch prepared by students and staff of the agriculture department.

Students competed in the areas of Beginning Arc Welding, Beginning O-A welding, plasma cutting, GMAW, woodworking, plumbing, electricity, tap and die, tool i.d., engine parts i.d., master mechanic, GPS, and O-A cut-

ting. The students showed the skills that they had learned in their individual schools and the competition was stiff.

Schools competing were Mac-Hi, Weston-McEwen, Pendleton, Pilot Rock, Heppner, Hermiston, Stanfield, and Irrigon. Prizes were provided by our industry partners at Norco and OxArc. A huge thank you goes out to all who made this competition a great.

## BMCC Value Added Products for Farmers Market

Value added products sold at farmer's market that are produced by BMCC Agriculture Students include coffee, hanging baskets, bedding plants, patio pots, herb bowls, and vegetables. These products are sought out by many for their quality, and as a show of support for the agriculture department.

Dale Wendt, instructor, has tire-

lessly participated in the farmer's market in Pendleton since its inception. The selling of products brings smiles to people and the public relations aspect of getting the word out on what is done at BMCC is priceless. People love quality products and that is what they receive when purchasing from BMCC Agriculture Department members. Students participate in the market

on occasion and see what working with the public is like. They also get to hone their communication and marketing skills. Plants are for sale Monday-Friday from 8-5 at the Agriculture Complex on the Pendleton campus.



**Friday Farmers Market  
Downtown Pendleton**

## Stock Dog Class—Gathers a Crowd!

In 2008 Nick Nelson and Blue Mountain Community College developed the first accredited stock dog class in the nation. The class is designed after the Chico State stock dog club, but in this instance gives students credit for their involvement in the class.

The class teaches students how to train and use a working dog. Dogs can be extremely useful on the ranch serving as many times the ranches

most responsible employee—but an unmanageable dog can take 5 employees to fix the wreck.

The class is worth 1 credit but can also be taken as a non-credit seminar course. The class meets once a week in the evenings during the last five weeks of spring term, every other year.

In 2008 there were 18 students and dogs enrolled, this year there are over 25.

Any breed of herding dog can be enrolled, preference being to Border Collies as the easiest and

quickest to train. Dogs are started on sheep and are taught right and left flanks, gathering, fetching, driving and balance off of the handler. Advanced dogs will be allowed to do some cattle work towards the end of the term.

Donna and Dave Grimes are assisting students in the class and have donated the use of their sheep.



### 2009 BMCC OSTANDING AG STUDENTS

Outstanding Crop  
Student:

*Chris Luttrell  
McMinnville, OR*

Outstanding  
Mechanics Student:

*Chris Poorman  
Monroe, OR*

Outstanding Animal  
Science Student:

*Crystal Deschaine  
Milton-Freewater, OR*

Outstanding Business  
Student:

*Stephanie Gunkel  
Goldendale, WA*

Outstanding Ag  
Athlete:

*Jarod Roberson  
Mtn. Home, ID*

## BMCC Agriculture Sees Huge Enrollment

Blue Mountain Community College Agriculture has seen a huge enrollment over the 2009-10 year. It is hard to say whether it is due to recruitment efforts being made or due to the fact that the economy has been in a low over the past year. The instructors aren't complaining however and plan to still increase numbers for the 2010-11 year.

Fall term had the largest enrollment with 334 seats in 14 courses which was 91 more seats than the previous year. Fall term was the highest enrollment in 11 years in the Ag Department.

Usually with college departments you will find attrition in the second and third terms. Winter term had 324 seats out of 13 courses, still yielding

about 24 students per course.

The Spring term had 244 seats up 46 students from the previous year and averaging 20 students per class.

The Ag department will continue to recruit at the State FFA Convention as well as make high school visits to keep enrollment numbers up for the years to come.

## Andy's Big Day

The Animal Science Department along with Dr. Fred Robinson completed a successful surgery on a 2yr old Corriente steer named Andy.

Andy was fitted with a three inch canula on his left side which will allow students access to his rumen. All ruminant animals ferment their

food by use of microorganisms in the rumen compartment of their stomach.

The fistulation will allow Animal Nutrition and Animal Health students to be able to evaluate the overall health of the animal through rumen flora populations as well as to see



increased gains and efficiency. Andy will be teaching students for years to come about the nutrition needs and health of ruminant animals.

# Green House Production

With 3 greenhouses the students at BMCC have been busy growing plants. Over 2000 geraniums were sold to the local PEO group as a fund raiser. 150 hanging baskets went to the Lion's Club in Umatilla as a fund raiser. The greenhouses are still full with hanging baskets and patio pots, vegetables and herbs, bedding plants and more. Feel free to visit us Monday through Friday from 8-5 to see what we have and purchase something for your home or business. Questions call Preston at 278-5847



**April, 2010:**  
**Local PEO Club**  
**hosts annual**  
**Geraniums**  
**Fundraiser Sale**  
**Grown by**  
**BMCC**  
**Agriculture**  
**students.**

## Certificate Programs new to the department

New this year are two certificates for students enrolled in agriculture at BMCC. The certificates are Pest Management and Beef Production. Both certificates require less than 45 credits and allow students to complete them in 1 year. Industry, through our advisory committee, has spoken to the need for these certificates and our program is responding to that need.

While we hope that students will complete the total program and earn a degree, we realize that time and money constraints may not make that possible for all students. We encourage you to check out the offerings by our department and see if something will meet your needs.

### Pest Management Classes

AGM 131	AGR 111
AGM 240	CSS 100
HORT 100	CSS 240
CSS 210	RNG 241

### Beef Production Classes

ANS 121	ANS 220
ANS 216	CSS 210
ANS 122	ANS 216
ANS 211	RNG 241

## Coffee—BMCC Niche Marketing

Dale Wendt knows beans about coffee. Several years ago Dale thought up a way to create a product niche with his favorite drink in the world—coffee. He started roasting coffee beans and selling the product at the local farmers markets. With students they named the product Blue Brew. You can have just about any variety you would like to purchase and it will

be guaranteed fresh. Blue Brew is sold in its liquid form at the BMCC bookstore or you can buy it at the Ag complex for \$4 / half lb.. Dale also sells the coffee at the farmers market every Friday for \$5/half lb. and you can purchase it as whole beans or all ready ground as well as decaffeinated.

Dale's marketing class is always

looking for new ways and ideas to create a niche market in agriculture to make farms and ranches more sustainable and more competitive in an incorporated industry.

Contact Dale Wendt :

@

541-278-5869



**Whitney Stahl Displays**  
**Blue Brew Coffee**

# Stevie the Chianina Steer



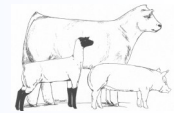
**Steve Passalaqua and Mr T.**

BMCC Ag Department received a new student this year, his name is simply Stevie. Stevie is a steer donated by VandenBrink Dairy in Ione. He was named after Steve Passalaqua seen in the photo and was sired by Mr. T also pictured. Steve Passalaqua was a very active member of the Chino Valley FFA who died at very young age of 33, and Stevie the steer was donated to provide livestock education to our students in his memory.

Stevie was an active participant in the nutrition class this year providing information on weight gain, cost of gain, feeding regimes, back fat ultrasounds and was very good in giving examples of the differences between English and Continental breeds of cattle. We wish to thank the VandenBrink Family for their support of Agriculture Education and their donation of Stevie.



## Livestock Team Competes in Texas



The BMCC Livestock Team competed in two national contests this year, both being in Texas. The 2010 team is a completely new crew that started off the year at San Antonio in February. The team placed 18th out of 25 teams, with special recognition from Josie Miller who scored a 49 on her market steer reasons. High person on the team was Shelby Flem.

The team traveled to Houston on a red-eye flight in March. They practiced at Texas A & M University before the contest on sheep, cattle, swine and goats. The team placed 17th out of 33 teams with Kayla Taylor being the high point on the team.

Redlands and Blinn College were

the top Jr. Colleges in the collegiate contests and are finishing up their year of eligibility at the Houston Contest. The BMCC team started their year as most teams are finishing up.



**2010 BMCC Livestock Judging Team**

This next fall the team will compete at three contests—Fresno, Ca., Phoenix, Az., and Denver, Co.

The BMCC team hopes to improve on their team placing and feel they have a leg up finishing when majority of the schools are starting out. Four of the BMCC team members (Justin Jarvis, Josie Miller, Kayla Taylor, and Crystal Deschaine have opportunities to become Collegiate All Americans if they were to compete at Denver, Houston, Louisville and Kansas City.

This years team comprised of Justin Jarvis—Mt. Home, ID, Shelby Flem—Hood River, OR., Josie Miller—Heppner, OR, Kaitlynn Fellows—Athena, OR., Kayla